

# NNA | Navigating the New Arctic CO Community Office

Supporting highly collaborative research toward a more resilient, healthy, and equitable Arctic that is understood and stewarded for its role in the global system.



University of Colorado  
Boulder



ALASKA  
PACIFIC  
UNIVERSITY

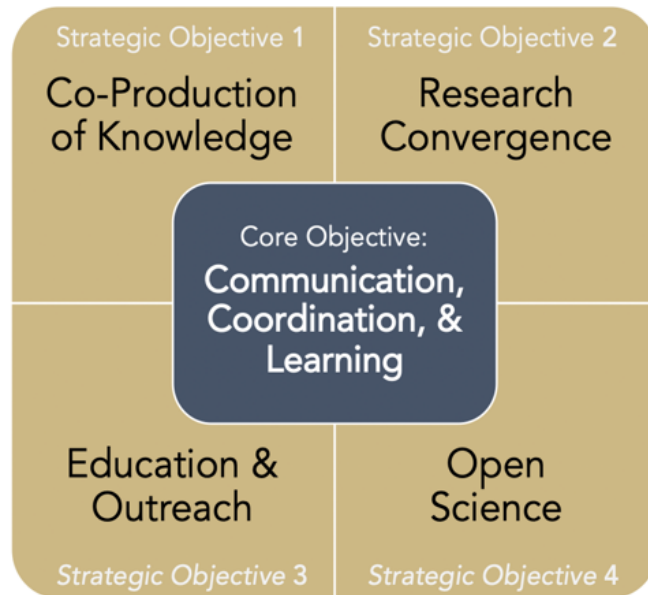


UNIVERSITY OF  
ALASKA  
FAIRBANKS



The NNA-CO serves the NNA community through support in four focus areas:

1. Co-production of knowledge between research partners and Indigenous Peoples of the Arctic
2. Convergence research—collaborative research that draws on expertise from across disciplines and knowledge systems to solve complex challenges
3. Coordinated and culturally responsive education and outreach
4. Open science approaches that promote and share resources for the openness, integrity, and reproducibility of NNA-funded research.



<https://nna-co.org/strategic-objectives>

## Serving as the NNA-CO Community Extension Office

- Facilitating local/regional NNA research partnerships and interfacing NNA research with Indigenous cultures, knowledge systems, and research needs
- **The Office of Research and Community Engagement (ORCE)** — established to facilitate the achievement of APU's strategic objectives and goals — provides an institutional foundation for the NNA-CO Community Extension Office to grow



# APU Community Extension Office Primary Goals & Values

Primary goals are **guided by our NNA-CO Indigenous Advisory Board, institutional vision and mission, and regular engagement with Indigenous communities and organizations including:**

- Partners: First Alaskans Institute, ANTHC, Kawerak, ELOKA, tribal partners, etc.
- NNA community training and resources for initiating, designing, and implementing collaborative research with Indigenous Communities
- Culturally appropriate curriculum to advance collaborative and community-based Arctic Research
- Communication processes and knowledge sharing: quarterly podcast, biannual periodical, respond to requests for support and connections



## Coordinated and impactful Education & Outreach (E&O)

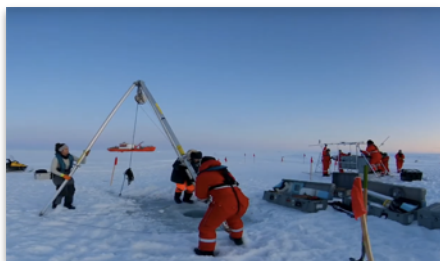
- Regular E&O trainings on evidence-based culturally responsive E&O
- Broader Impacts Network
- Virtual outreach fair building on strong and deep connections to educational networks and Arctic communities

## E&O engagement opportunities and resources for NNA researchers

- Development of multi-media content with NNA projects
- Virtual classroom visits by NNA investigators
- Storytelling workshops



E. Fairfax



A. Gold



K. Erickson



C. Buffington

# Broader Impacts Network

- Foster collaboration and learning across projects and project members
- Connect scientists to outreach opportunities
- Increase visibility of NNA research
- Increase capacity for culturally appropriate education and outreach across the network

What to you is the most important characteristic of a broader impacts network in the Arctic?





## Goals

- Reduce “scientist overload”
- Fit NNA outreach within community calendar
- Celebrate studying the land
- Provide opportunity for youth and scientists to share work
- Make NNA science accessible to diverse audiences

E. Sparrow



K. Spellman



K. Erickson



K. Erickson

## SAVE THE DATE

Meet scientists, learn about teacher resources & get inspired!

**16**  
FEBRUARY

### Arctic Educators Fair

Are you an Alaskan educator or an Arctic-inspired teacher? Do you want to engage with real scientists? Join the Arctic Educators Fair to learn about place-based science and art opportunities, and connect your students with researchers studying the changing Arctic.

The fair is virtual and will take place at 4 p.m. Alaska time. This event is endorsed by the Alaska Science Teachers Association.

RSVP at <https://bit.ly/3EyR8cB>

**Sign Up: <https://nna-co.org/upcoming-events>**



Home / Upcoming Events

### Upcoming Events

February 8, 2022; 2:00pm Alaska / 4:00pm Mountain / 6:00pm Eastern

Details forthcoming.

### Arctic Educators Fair

February 16, 2022; 4:00pm Alaska / 6:00pm Mountain / 8:00pm Eastern

Do you want an opportunity to connect your NNA project to Alaskan educators? Join the NNA-CO for the Arctic Educators Fair on February 16, 2022. This year's fair will focus on Alaska, with outreach fairs with an international focus planned for future years. The goal of this event is to help disseminate great ideas in education, learning products (curricula, videos, learning activities), or opportunities for student or educator engagement (REU, RET, community science, meet-the-scientist video calls, etc.) produced by NNA project teams. If you are interested in sharing your project opportunities, learning products, etc. with K-16 educators, please sign up now to give a flash talk using [this link](#).

Contact Us

Subscribe to the NNA-CO Newsletter

@ArcticTogether

Navigating the New Arctic Community Office

The NNA-CO is supported through a cooperative agreement (Award # 2040729) with the U.S.



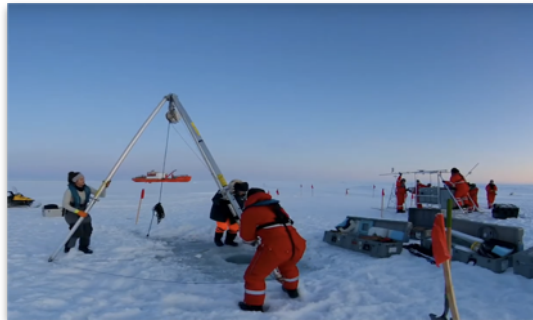


# Funding Opportunity for NNA: Supplements

**NEW**

- Research Experiences for Undergraduates/Research Experiences for Teachers (REU/RET; [NSF 19-582](#)) - *due: March 2022*
- Career-Life Balance supplements (CLB; [NSF 21-021](#) and [PAPPG II.E.8](#)) - *due: rolling submissions*

A. Gold



V. Padula



## NSF Navigating the NNA Proposal Preparation and Merit Review Process Workshop 2021

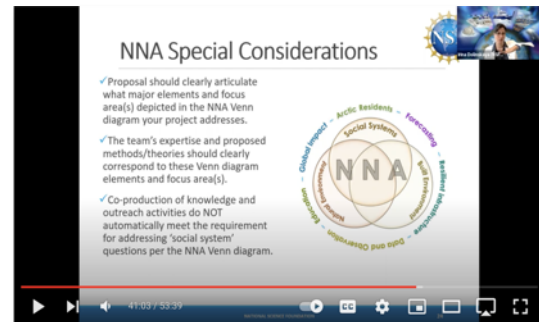
December 9, 2021; 10:00am-12:00pm Alaska / 12:00pm-2:00pm Mountain / 2:00pm-4:00pm Eastern

The National Science Foundation (NSF) held a Navigating the New Arctic (NNA) proposal writing workshop on December 9, 2021, hosted virtually by the NNA Community Office. The first hour of the workshop consisted of an overview of the NSF review process and Intellectual Merit and Broader Impacts criteria, as well as most common mistakes made by investigators when submitting a proposal. The second hour was structured around breakout rooms with NSF program officers. These breakout rooms aligned with the three NNA grant types: incubator grants, research grants, and collaboratory grants.

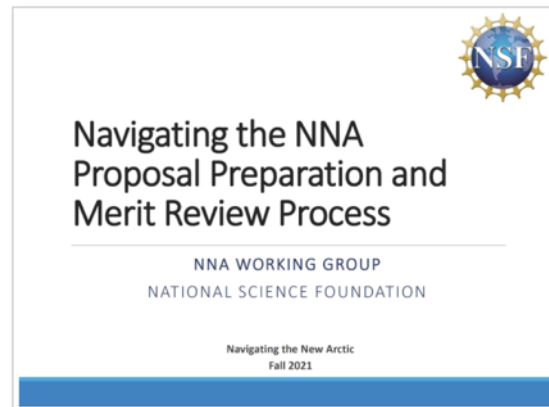
For more information on the [FY22 solicitation](#), please view this [NSF NNA Program Manager Chat recording](#), hosted by IARPC Collaborations on December 8, 2021. The program manager chat slides can be found [here](#). For answers to frequently asked questions about the FY22 NNA solicitation, please visit this [webpage](#).

<https://nna-co.org/past-events>

## Presentation Recording



## Presentation Slides

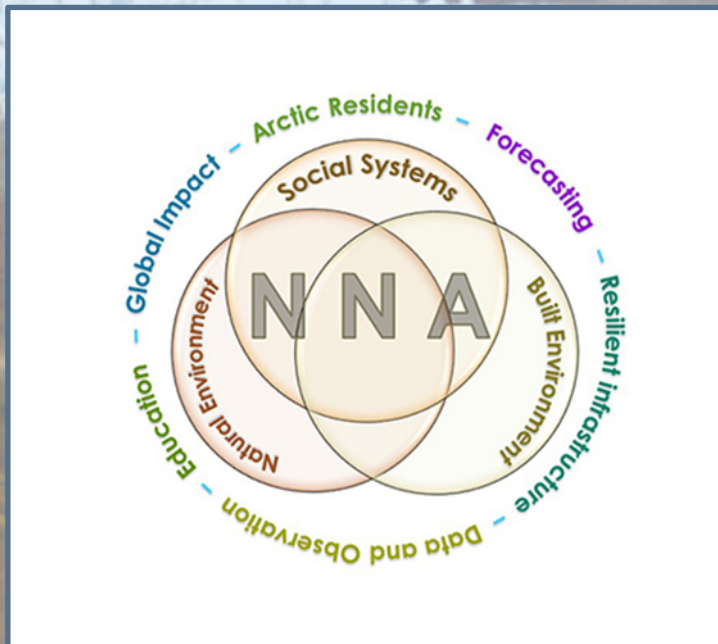


# What is Convergence Research?

Driven by a vexing and complex challenge, developed from societal need or pivotal scientific significance

Formed from deep connection across disciplines and knowledge systems

# What is Convergence Research?





## Convergence Working Groups

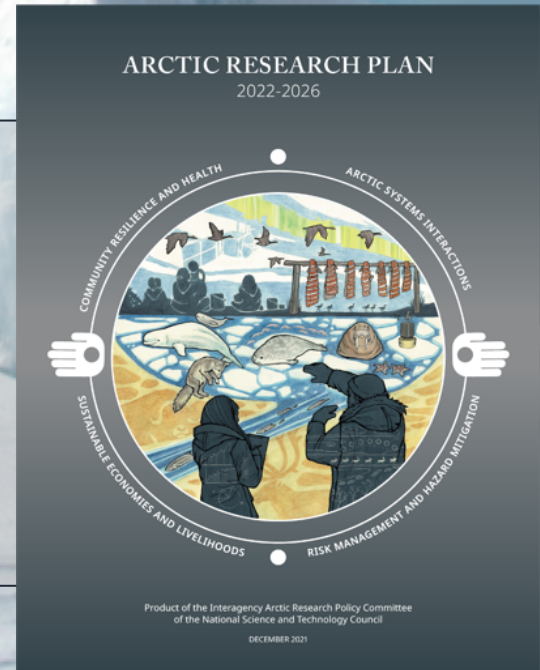
- Bringing together NNA projects and key partners for cumulative and broader impact
- Supported by Early Career Fellows
- Documenting and sharing collaboration process and best practices
- Creating custom data web-portals (with Arctic Data Center)



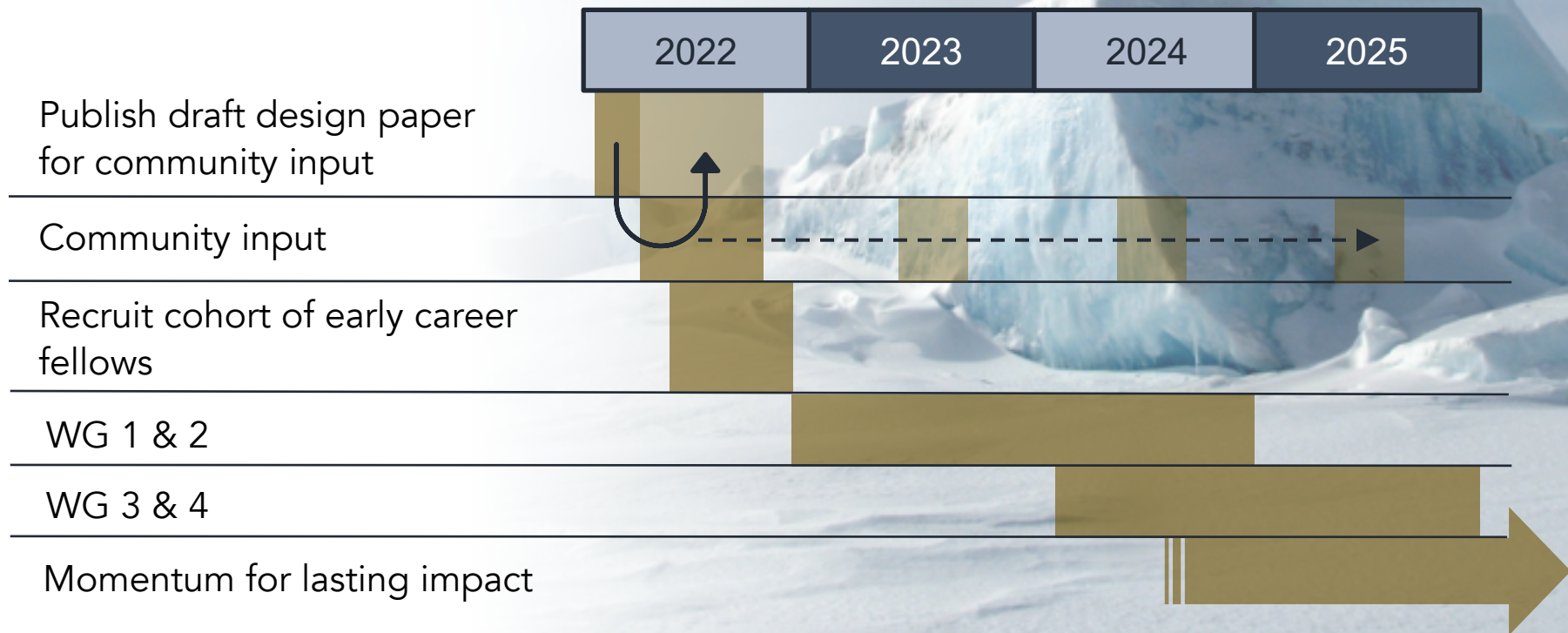
# Convergence Working Groups

## Topics to be informed by Arctic Research Plan Policy Drivers

- Enhance the well-being of Arctic residents
- Advance stewardship of the Arctic environment
- Strengthen national and regional security
- Improve understanding of the Arctic as a component of planet Earth



# Convergence Working Groups



# Convergence Working Groups

## *Key Questions*

- 1) What cross-cutting themes or topics may provide focus for the working groups?
- 2) How can we ensure an accessible and equitable process for collaboration?
- 3) How do we ensure impact beyond NNA and sustain momentum for investment, collaboration, and action?

# NNA | Navigating the New Arctic CO Community Office

 [nna-co.org](https://nna-co.org)

 ArcticTogether

